

## Wireless-B Broadband Router Wireless Mac Filtering Instructions

Open Internet Explorer and type **192.168.1.1** in the address bar.  
A login box will come up and by default the username should be left blank and the password is “**admin**”.

Click on the **Wireless Tab**

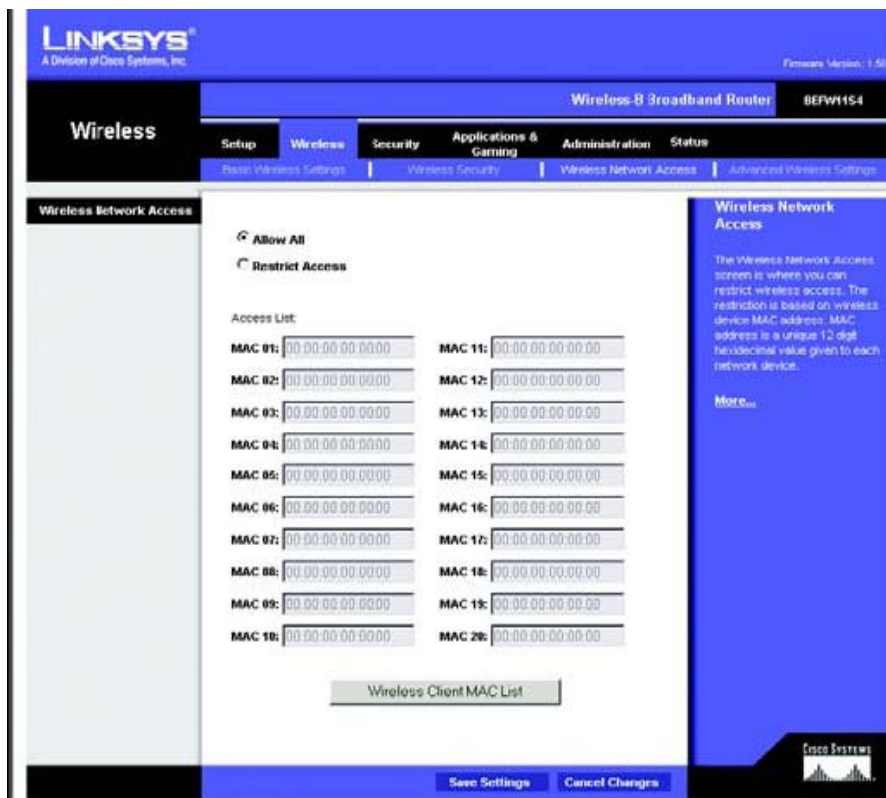
Then click on **Wireless Network Access**

**Wireless Network Access.** To restrict access to the network, select **Restrict Access**.  
Click the **Wireless Client MAC Address** button, and the Wireless Client MAC list will appear.

Select the **MAC Address** from the list and click the **Select** box, then click the **Select** button.  
Click the **Close** button to return to the previous screen.

When finished making your changes on this tab, click the **Save Settings** button to save these changes, or click the **Cancel Changes** button to undo your changes.

**Figure 5-18: Wireless Tab - Wireless Network Access**



**Figure 5-19: Wireless Tab - Wireless Client MAC List**

