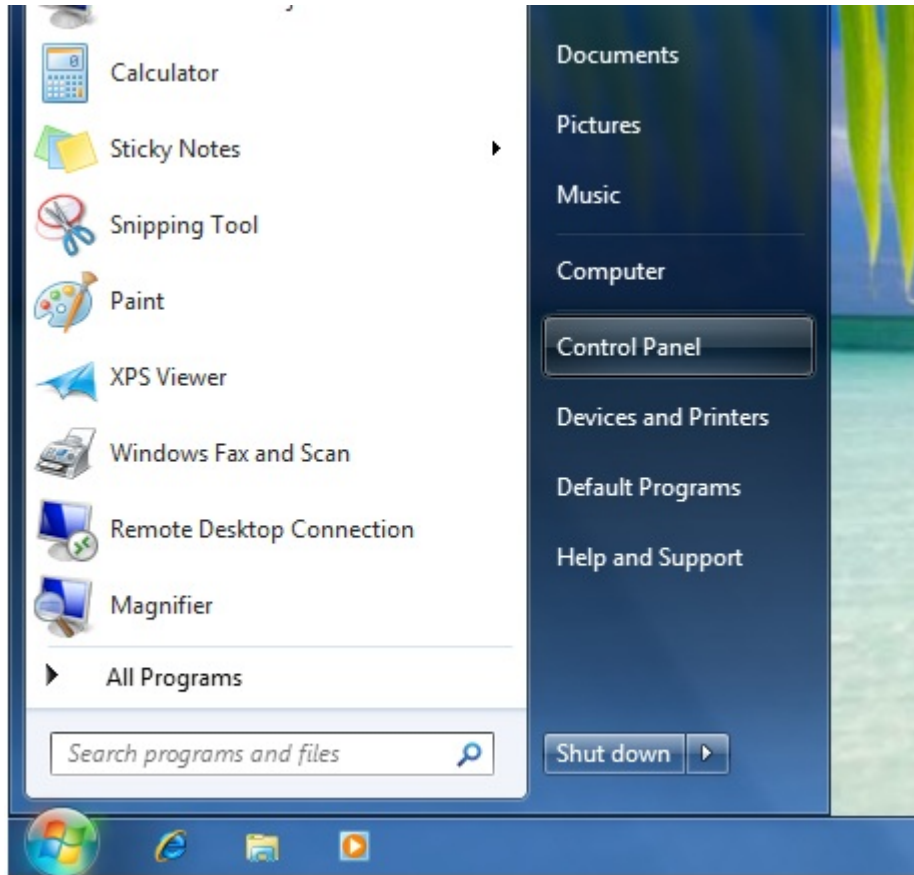


Windows 7 Dial Up Connection Instructions

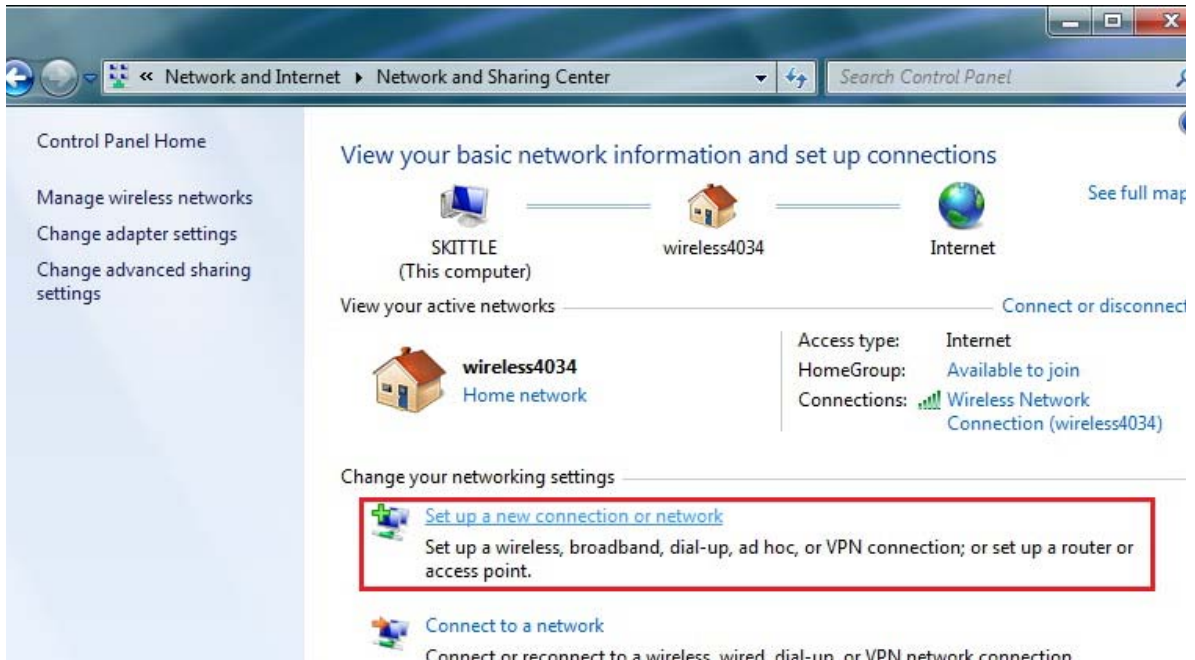
1. Click on START, and then click on CONTROL PANEL.



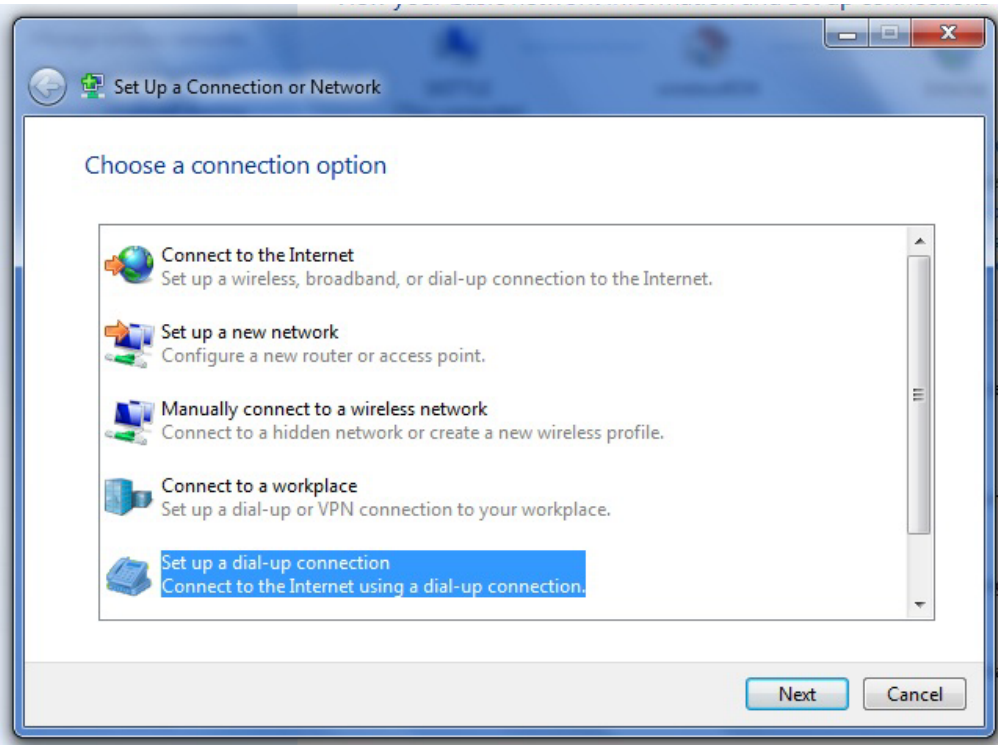
2. Click on VIEW NETWORK STATUS AND TASKS under NETWORK AND INTERNET.



3. Click on SET UP A NEW CONNECTION OR NETWORK.



4. Click on SET UP A DIAL UP CONNECTION, then click on NEXT.



5. In the next window, type in the DIAL UP ACCESS NUMBER, dial up USERNAME, and dial up PASSWORD that was provided to you by Consolidated. Check the option to REMEMBER PASSWORD. Also check ALLOW OTHER PEOPLE TO USE THIS CONNECTION. Verify the phone line is plugged into the computer, then click CONNECT.

Create a Dial-up Connection

Type the information from your Internet service provider (ISP)

Dial-up phone number: [Phone number your ISP gave you] [Dialing Rules](#)

User name: [Name your ISP gave you]

Password: [Password your ISP gave you]

Show characters

Remember this password

Connection name: Dial-up Connection

Allow other people to use this connection
This option allows anyone with access to this computer to use this connection.

[I don't have an ISP](#)