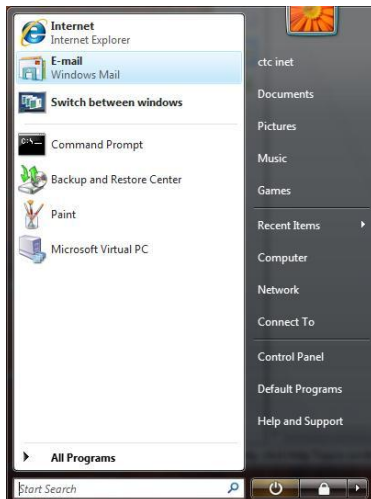
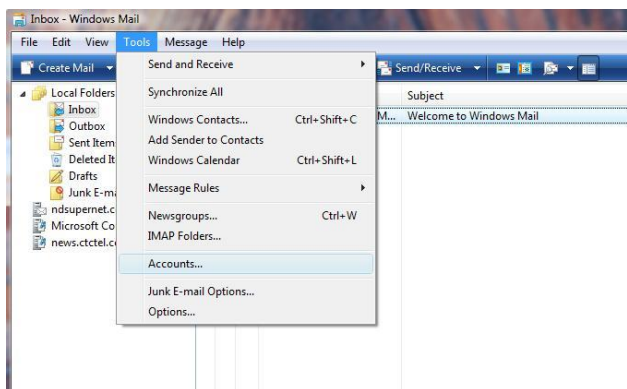


Windows Mail Email Setup

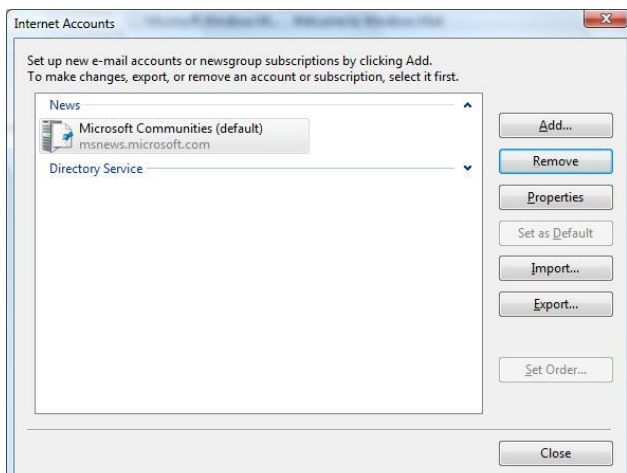
Step 1: Click on the Flag in the lower left corner of your screen and select Windows Mail. (If it is not listed here then go to "All Programs" and click Windows Mail from the list)



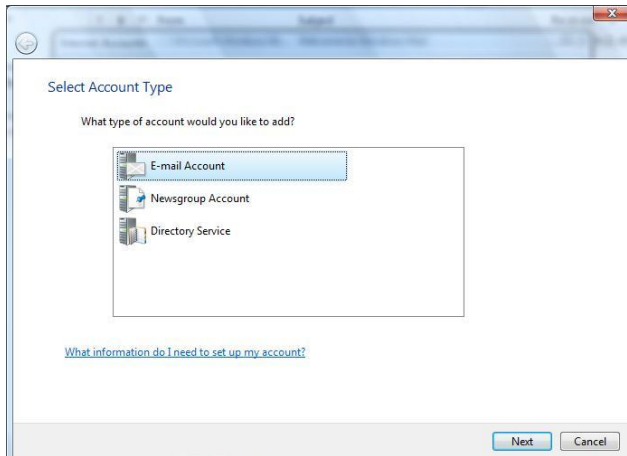
Step 2: Click on Tools and Accounts



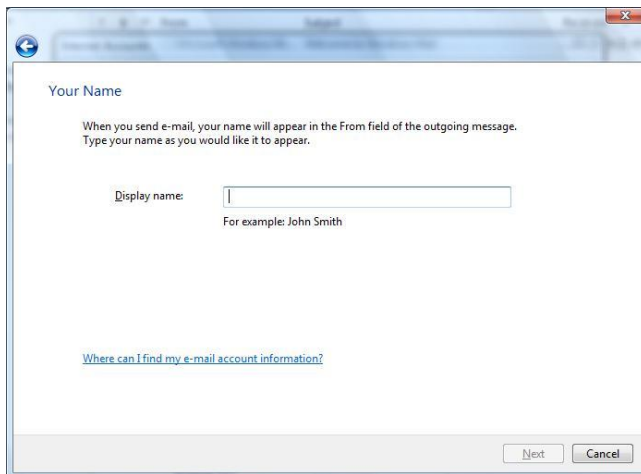
Step 3: Click on Add



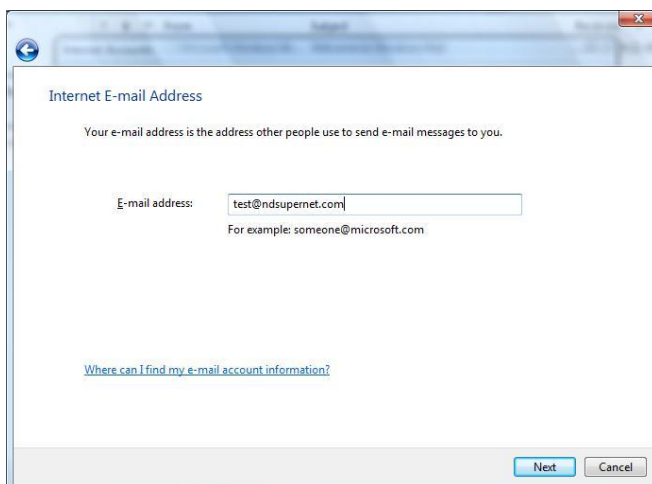
Step 4: Select Email Account and Click Next



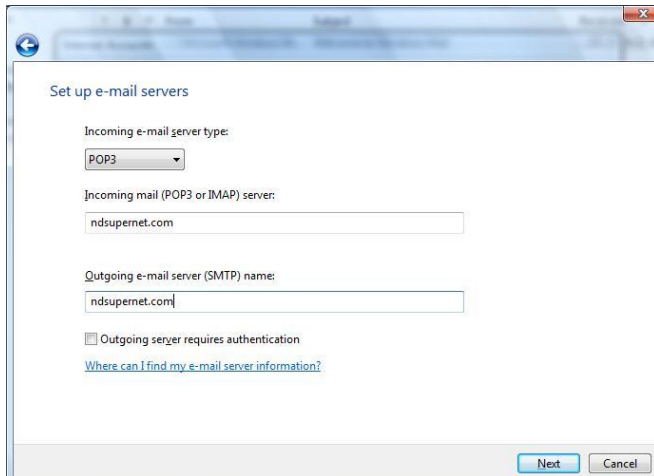
Step 5: Enter your Display Name and click Next



Step 6: Enter your email address (ex. john@ndsupernet.com or john@ctctel.com) and click Next



Step 7: Enter the Incoming and Outgoing servers which will be the same for both (ex. ndsupernet.com or ctctel.com) Click Next



Set up e-mail servers

Incoming e-mail server type:
POP3

Incoming mail (POP3 or IMAP) server:
ndsupernet.com

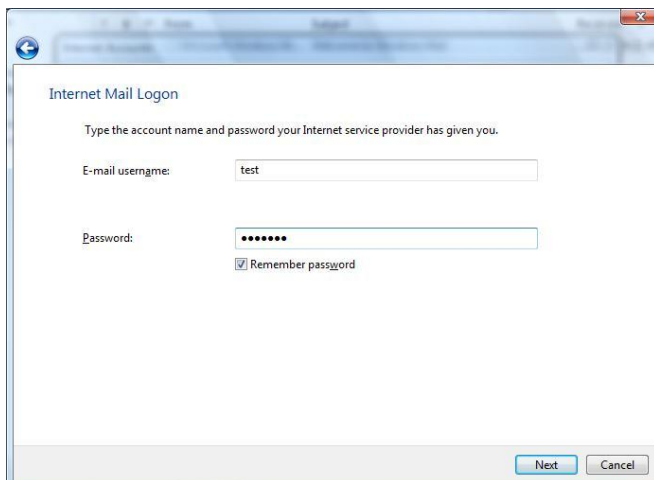
Outgoing e-mail server (SMTP) name:
ndsupernet.com

Outgoing server requires authentication

[Where can I find my e-mail server information?](#)

Next Cancel

Step 8: Enter your email password (the username should already be displayed at this point) Click Next



Internet Mail Logon

Type the account name and password your Internet service provider has given you.

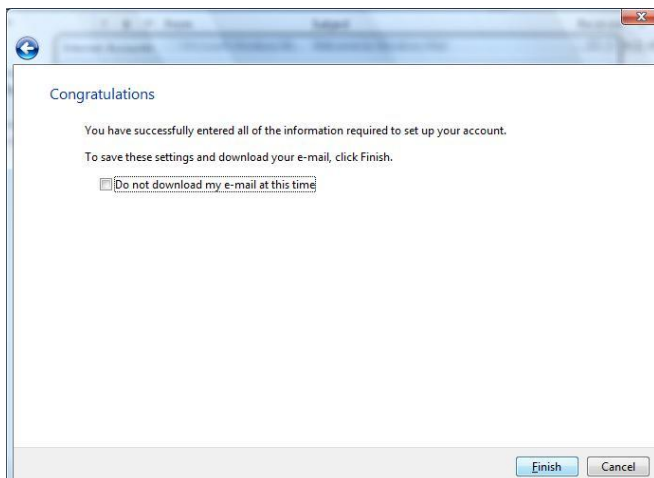
E-mail username: test

Password:

Remember password

Next Cancel

Step 9: Click Finish



Congratulations

You have successfully entered all of the information required to set up your account.
To save these settings and download your e-mail, click Finish.

Do not download my e-mail at this time

Finish Cancel

Step 10: Click Close on the Internet Accounts window and your email is successfully setup.