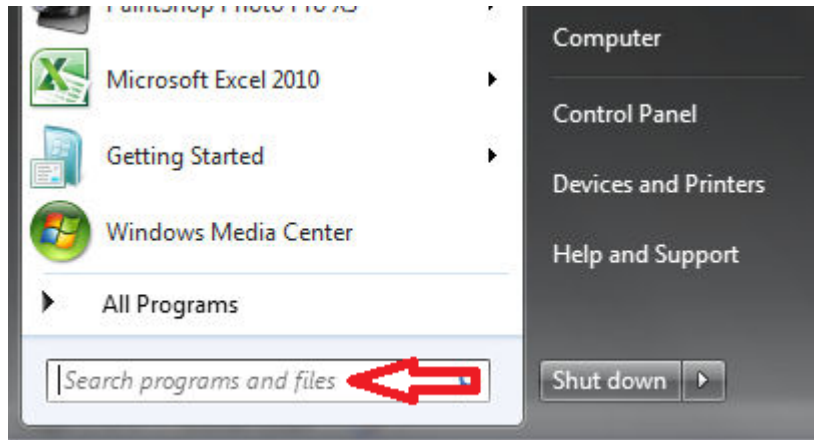


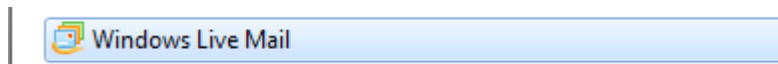
Windows Live Mail Setup Instructions

First click on the **Start** button 

Next, in the Search programs and files line type in **Windows Live Mail**

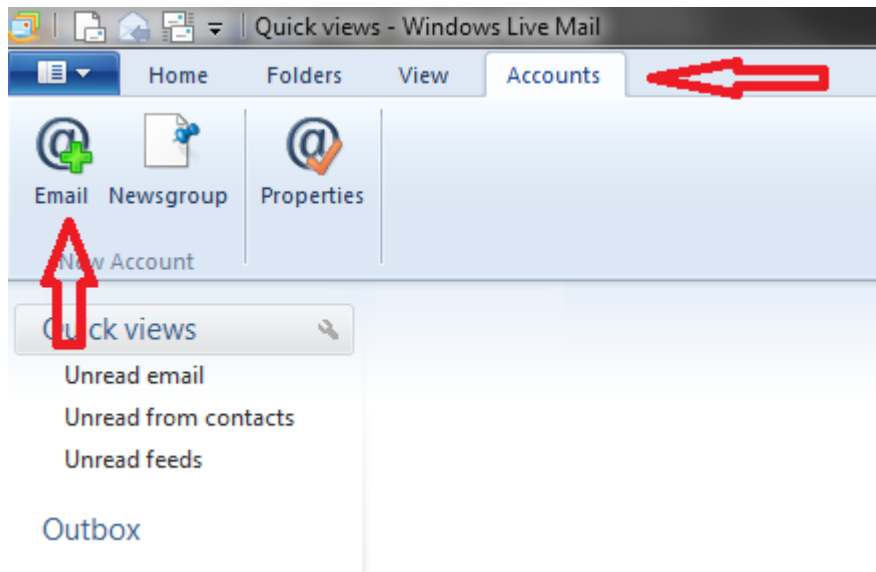


Next click on **Windows Live Mail**



In the *Windows Live Mail* window you will first need to click on the **Accounts** tab.

Once in the *Accounts* windows you will see the **Email** button and you will need to click there.



In the *Add your email accounts* window you will first need to fill in your **Email Address** and **Password**, this information would have been given to you when you signed up for your internet account.

After filling in the email address and password you can enter your **Display Name**. The Display name is what will show up in the send line when you send an email to someone and can be anything you choose.


Finally, click in the box next to **Manually configure server settings**, so that there is a check mark.

Click **Next**.


Windows Live Mail

Add your email accounts


If you have a Windows Live ID, sign in now. If not, you can create one later.
[Sign in to Windows Live](#)


Email address:  Most email accounts work with Windows Live Mail including Hotmail Gmail and many others.

[Get a Windows Live email address](#)

Password: 

Remember this password

Display name for your sent messages: 

Manually configure server settings 

In the *Configure server setting window* there are multiple lines to fill out.

1. Server Type: **POP**
2. Incoming Server Address: **ndsupernet.com**
3. Logon User Name: **This is the first part of your email address**
4. Outgoing Server Address: **ndsupernet.com**
5. Requires Authentication: **Click to place check mark in the box**

All other settings in this window stay the same.

Click **Next**

Windows Live Mail

Configure server settings

If you don't know your email server settings, contact your ISP or network administrator.

Incoming server information

Server type: POP (1)

Server address: ndsupernet.com (2) Port: 110

Requires a secure connection (SSL)

Authenticate using: Clear text

Logon user name: username (3)

Outgoing server information

Server address: ndsupernet.com (4) Port: 25

Requires a secure connection (SSL)

Requires authentication (5)

Cancel Back Next

Click **Finish**

