

Wireless-G Broadband Router Model WRT54G2 Wireless Mac Filtering Instructions

Open Internet Explorer and type **192.168.1.1** in the address bar. (Preferably on a computer wired to the router)

A login box will come up and by default the username should be left blank and the password is "**admin**".

Click on the **Wireless Tab** and select **Manual**

Rename the Wireless Network Name SSID "linksys" to something unique to your connection (Ex. Pets name, nickname, a number, etc.)

The screenshot shows the Linksys WRT54G2 configuration interface. The top navigation bar includes 'Wireless', 'Setup', 'Wireless', 'Security', 'Access Restrictions', 'Applications & Gaming', 'Administration', and 'Status'. The 'Wireless' tab is selected, and the 'Wireless MAC Filter' sub-tab is active. The 'Wireless Network' section contains the following settings:

- Wireless Configuration: Manual Wi-Fi Protected Setup
- Wireless Network Mode: Mixed (dropdown)
- Wireless Network Name (SSID): linksys9999 (text input)
- Wireless Channel: 6 - 2.437GHz (dropdown)
- Wireless SSID Broadcast: Enable Disable

At the bottom, there are 'Save Settings' and 'Cancel Changes' buttons. A 'Cisco' logo is visible in the bottom right corner.

Then click on **Save Settings**

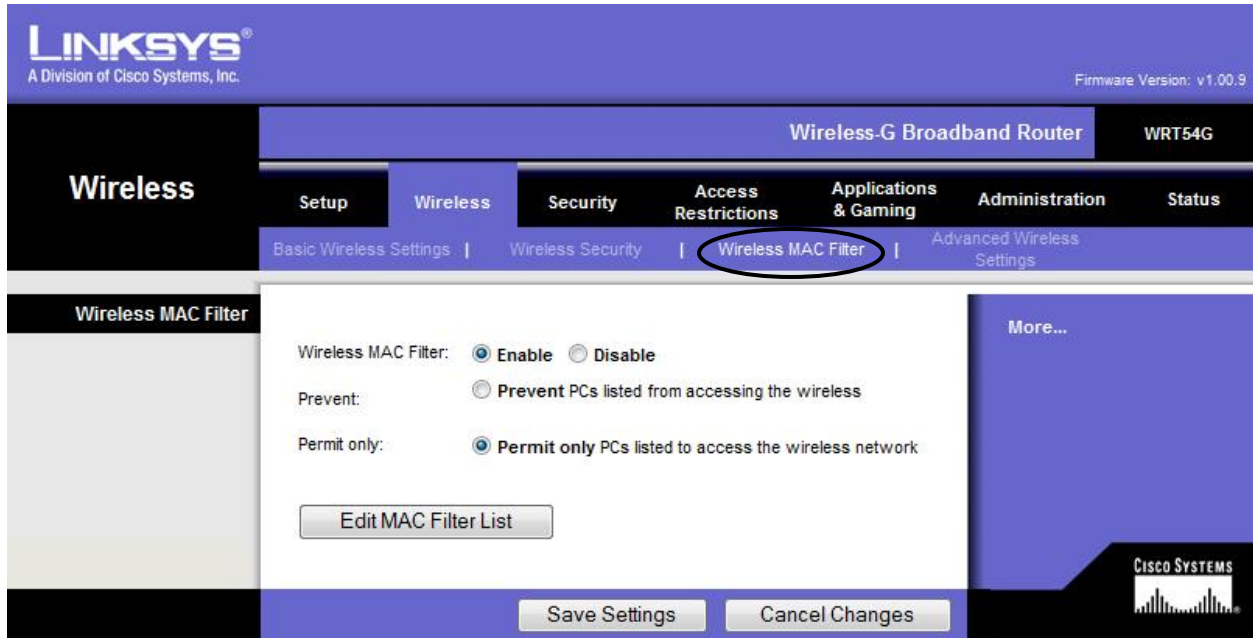
*At this point connect all wireless computers to the wireless network name that you choose above. If the computer is not seeing the updated network name then you will have to refresh the wireless network list.

Next click on **Wireless MAC Filter**

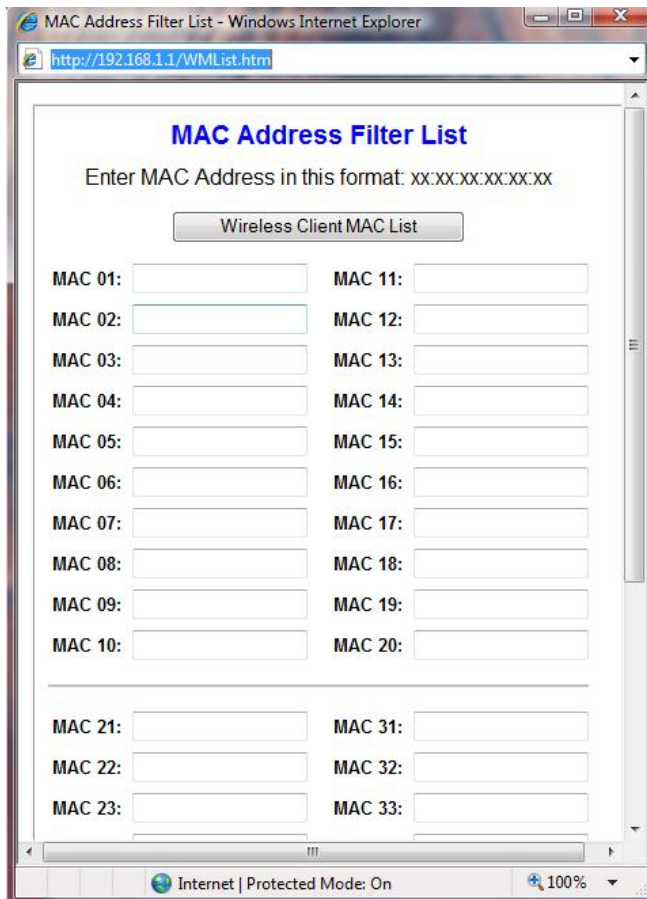
Then click the radio button beside **Enable**.

Then click the radio button beside **Permit Only**.

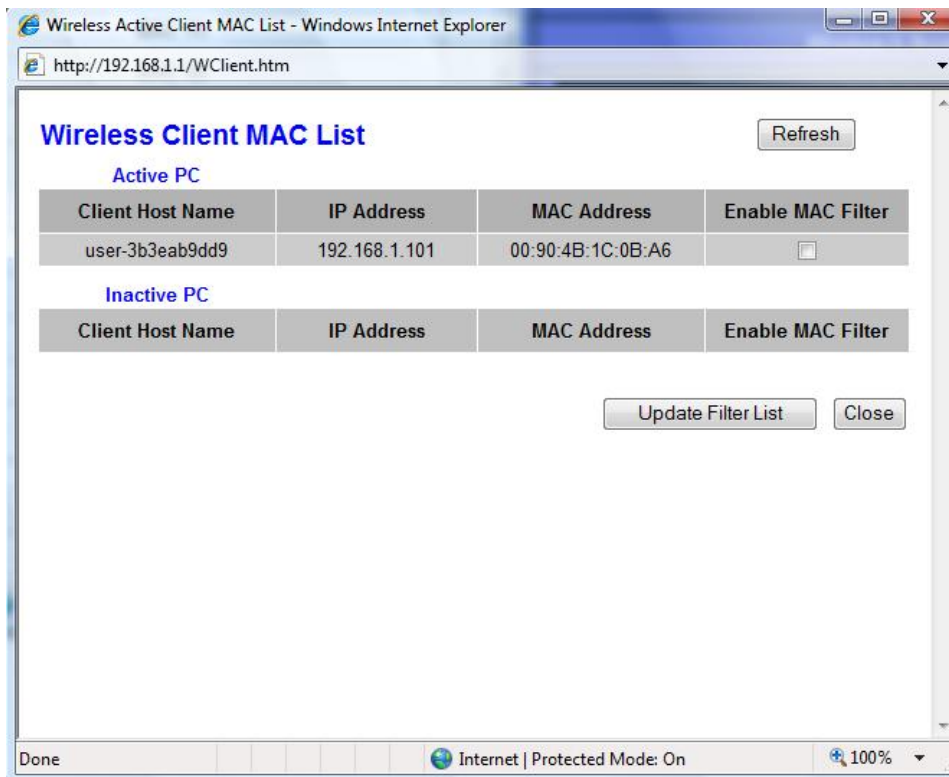
Click on the button **Edit MAC Filter List**.



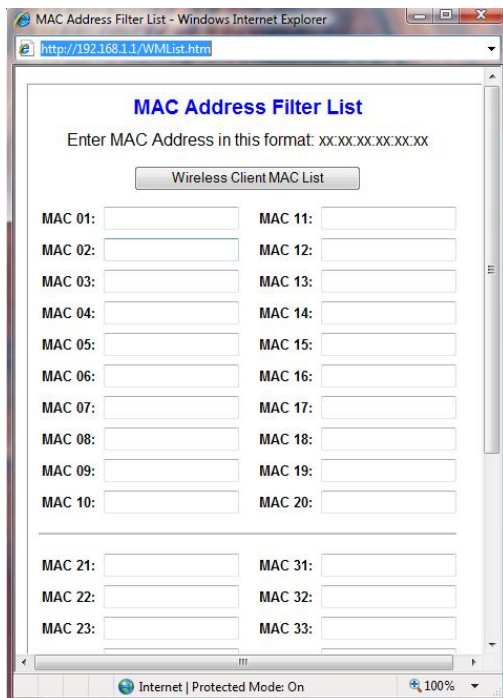
Then click the **Wireless Client/MAC List** button.



Then put a check in **Enable MAC Filter** under every Active computer connected. (this should total the # of wireless computers or devices in your home)
Click on **Update Filter List**.



Then click on **Save settings** on the bottom of the Mac Address Filter List.
Then click **Continue**.



Then Close the Mac Address Filter List with the X in the top right corner.
Then click on **Save Settings** on the Bottom of the Main screen
Click **Continue** one more time
Then Close Internet Explorer and you are done securing your wireless connection.